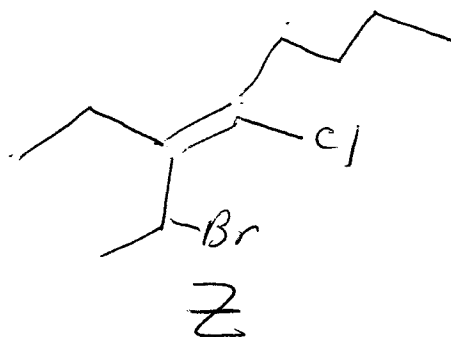
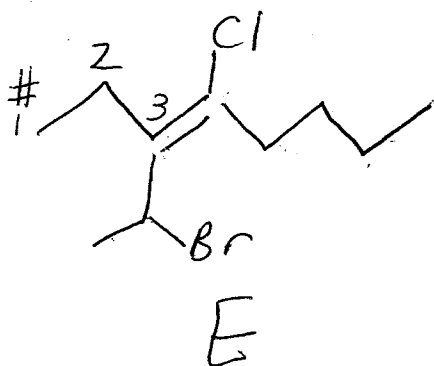


Post Quiz no. 4

Quiz no. 4 Answers

3-(1-bromoethyl)-4-chloro-3-octene



CARBON # 2 is sp^3 & carbon # 3
 sp^2

C# 3 has more S

character

Note: ~~Cmpd~~ ~~should~~ ~~have~~ ~~been~~
named

2-bromo-4-chloro-3-ethyl-3-octene