

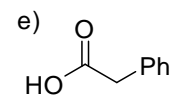
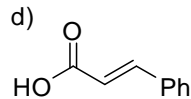
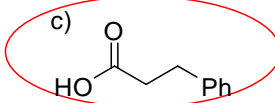
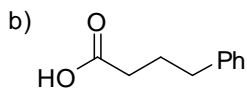
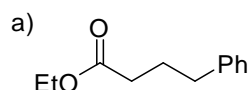
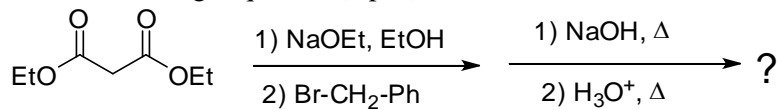
Organic Chemistry 2

Quiz #10

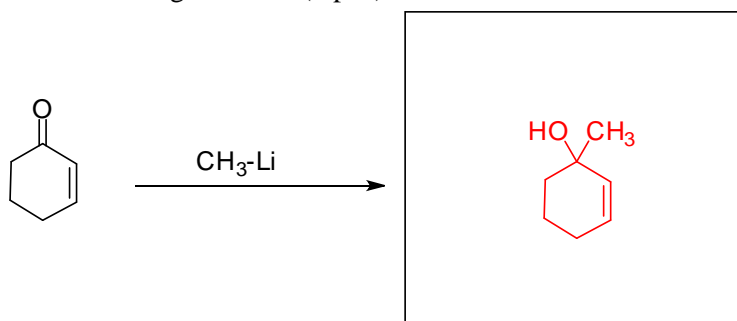
April 30, 2010

Name: Ryo Ishikawa

1. Select the product of the following sequence. (2 pts.)



2. Draw the product of the following reaction. (2 pts.)



3. If the cyclic amine, piperidine, is put into water, an acid-base equilibrium would be established. Circle the structure that represents the form of piperidine in the products of this equilibrium. (2 pts.)

