

Organic Chemistry 2

Quiz #2

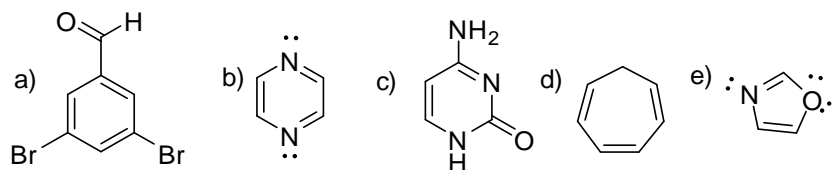
February 5, 2010

Name: _____

1. Which of the following is a true statement about kinetic and thermodynamic control reactions? (2 pts.)

- a) The thermodynamic product is the most stable product.
- b) The energy of activation barrier leading to the thermodynamic products is the lowest and most stable.
- c) The kinetic product is the lowest energy product.
- d) The kinetic product has the fastest activation energy.
- e) Kinetic control of a reaction is best accomplished at high temperature.
- f) Thermo and kinetic reactions are hot and they're cold; they're yes and they're no; they're in and they're out; they're up and they're down.

2. Circle all the structures which contain aromatic rings as drawn. (2 pts.)



3. Draw an aromatic resonance form of the nucleic acid guanine. Use curved electron flow arrows to show how you transformed guanine into the aromatic resonance form. (2 pts.)

