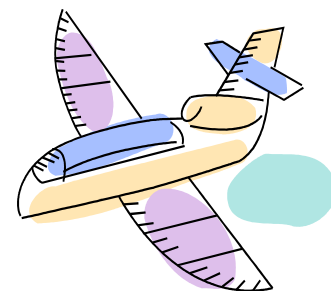


## *Traveling Outside the U.S.*

- If you are planning to travel during any school breaks, come to OIP at least two weeks before you plan to leave. We may not be available to process travel endorsement on the same day!
- If you plan to visit a country other than your homeland, check with that country's embassy for their policies on visa issuances. You might need to obtain a visa to enter that country.



## *To Re-enter the U.S. You Must Have:*

- **VALID VISA:** If your visa is F-1 or J-1 visa type, and is not expired, you need not apply for a new visa, if you plan to exit and reenter the U.S. with an I-20/DS-2019 to continue studies. If your visa expires while you are in the U.S., the next time you travel abroad you must obtain a new visa in order to be readmitted to the U.S.
- **VALID PASSPORT:** Your passport should be current at all times. If an expiration date is imminent it is important to get your passport renewed immediately.
- **VALID I-20/DS-2019:** Your I-20/DS-2019 must be endorsed at OIP within the semester you plan to travel. If any information on page one of your document has changed, you must be issued a new document. This is why it is important to allow enough time for your request for travel endorsement!
- **PROOF OF COURSE REGISTRATION:** It is advisable to obtain and carry a copy of your unofficial transcript from Virtual Bryn Mawr in case you are asked to provide verification of continued attendance at Bryn Mawr.



## *Traveling Within the U.S.*

**If you plan to travel, within the U.S. you should consider doing the following:**

- Take a photocopy of your passport, I-20 or DS-2019 and Bryn Mawr One Card with you.
- Leave the other immigration documents and your Social Security card in a safe place.
- You must carry proof of your immigration status at all times.

